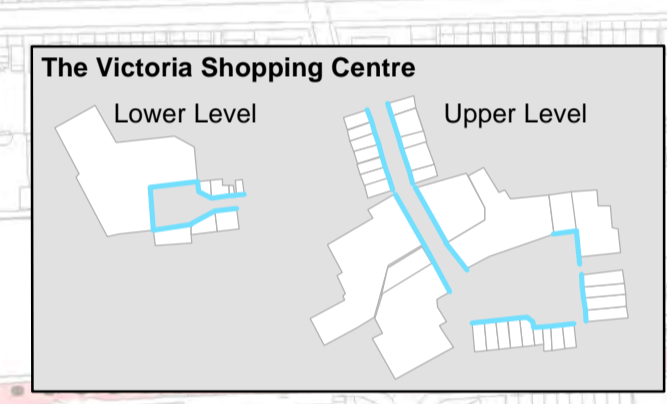
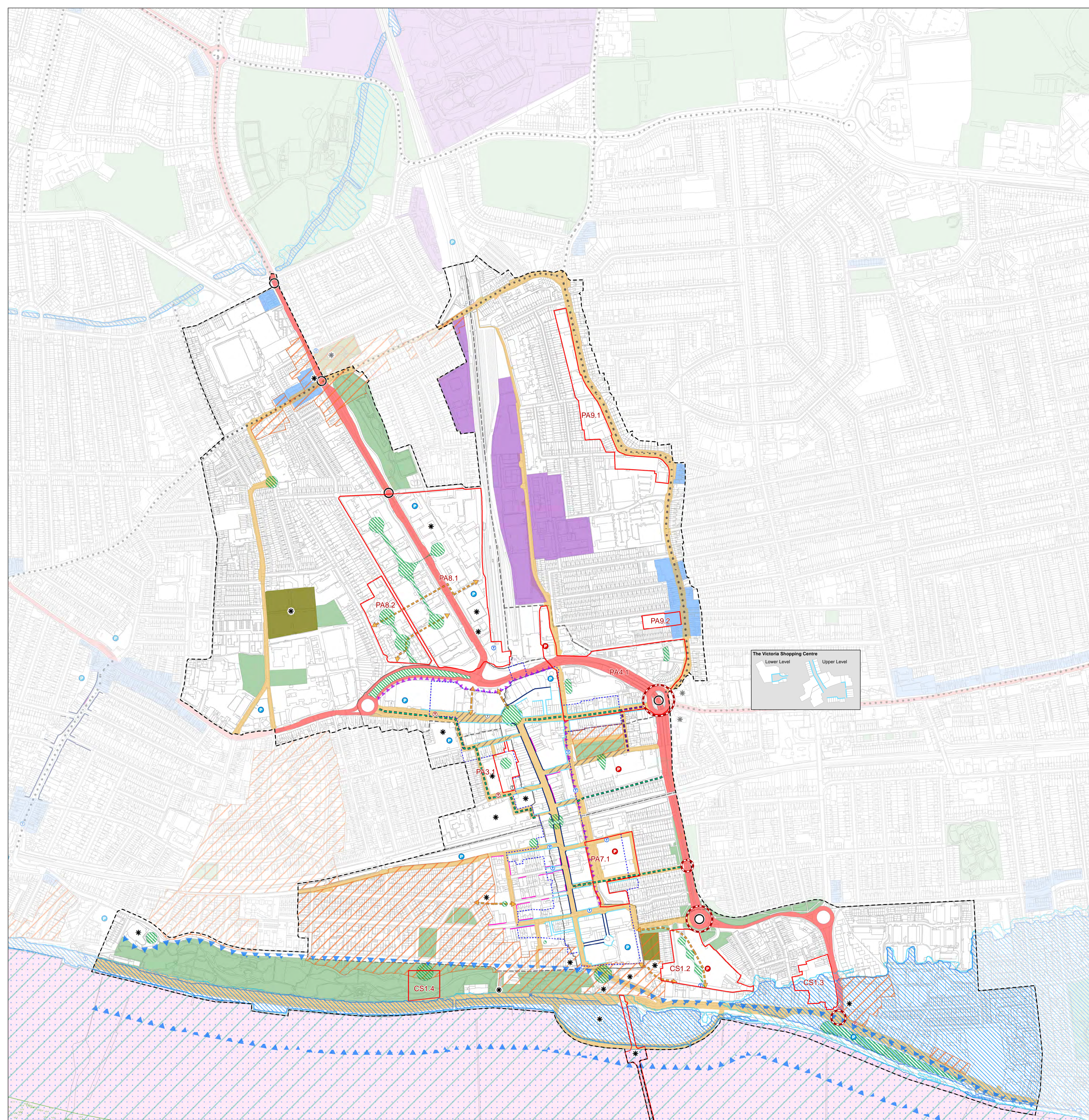
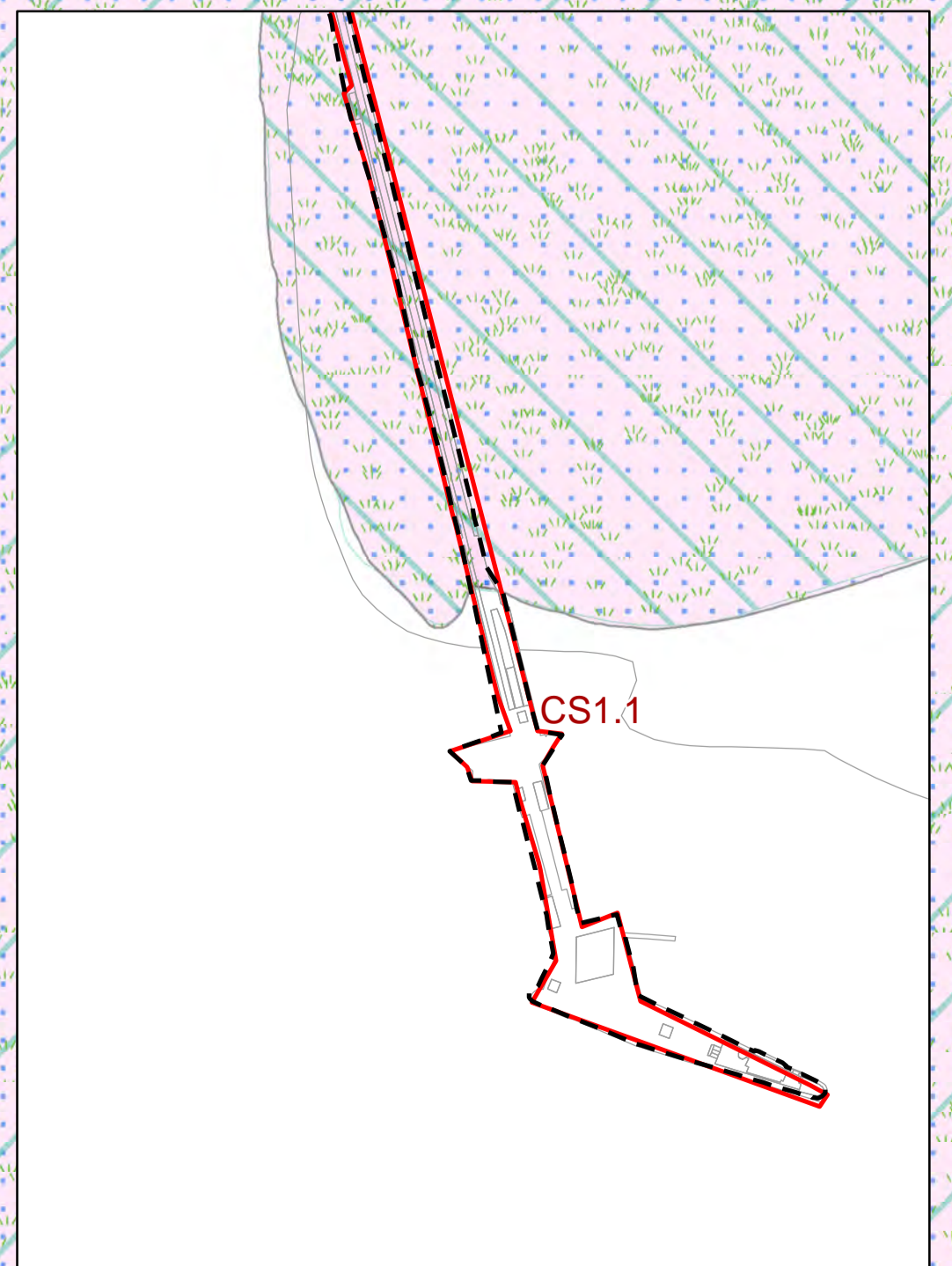
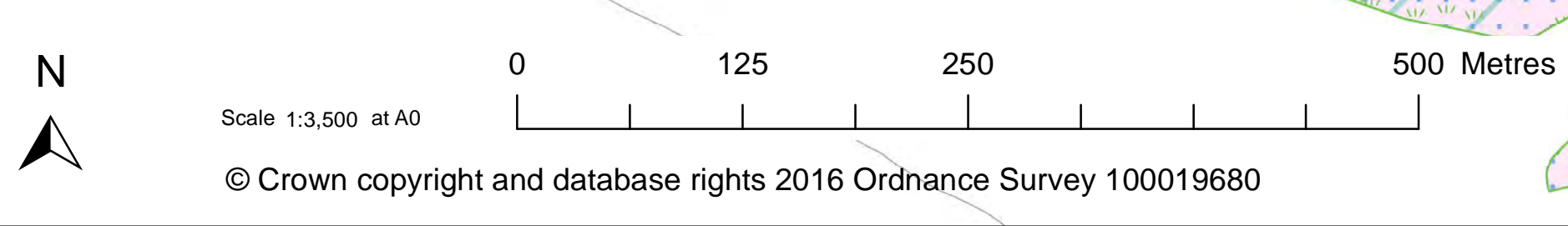


Southend Central Area Action Plan - Policies Map



Southend Central Area Action Plan Policies Map	
Southend Central Area Boundary	Movement and Activity
Southend Central Area Boundary	Key Public Realm Improvement (All Policy Areas, DS5, CP4)
Policy Area Boundaries	New/Improved Pedestrian/Cycle Links (All Policy Areas, DS5, DM15, CP3)
Policy Area Boundaries	Mixed Mode Pedestrian/Cycle Priority Route (PA2, PA3, PA4, PA7)
Site Allocations	Mixed Mode Shared Priority Route (PA4, PA5)
Opportunity Site	Proposed Pedestrianised Street (DS5, PA1, PA2, PA3, PA5)
Employment	Improved Cycle Route (DS5, PA2, PA8, PA5)
Employment Areas (KP1, CP1, DM1, DM11)	Improved Gateway Access for Pedestrians, Cyclists and Public Transport (DS5, CS1, PA2, PA4)
Town Centre Primary Shopping Area (CP2, DS1)	Main Route Network - Crossing and Environmental Improvements (DM5, DM16, CP5)
Town Centre Primary Shopping Frontages (DS1)	Proposed Strategic Junction Improvement (CP3, DS5, PA2, PA4, PA8, CS1)
Town Centre Secondary Shopping Frontages (DS1)	Existing Car Park (DS5)
Secondary Shopping Frontage - Local Centre (DM13)	Reconfigured Car Park (DS5, PA4, PA5, PA7, CS1)
Historic Environment	Existing Taxi Rank (DS5)
Conservation Area (KP1, CP4, DM5, PA5, PA6, PA8, CS1)	Relocated Taxi Rank (DS5, PA2, CS1)
Frontage of Townscape Merit (KP2, CP4, DM5, PA1, PA6)	Proposed Taxi Rank (DS5, PA2, CS1)
Townscape	Natural Resources
Visually Active Frontage (DS5)	Local Nature Reserve (KP1, KP2, CP4, CP6)
New/Improved Open Space - Indicative Location (All Policy Areas)	Ramsar (KP1, KP2, CP4, CP6)
Seafront Landmark Area (DS3)	Site of Special Scientific Interest (KP1, KP2, CP4, DM6)
Existing Landmark Building (DS3)	Special Protection Area (KP1, KP2, CP4, DM6)
Protected Green Space (KP2, CP4, CP7)	Local Wildlife Site (KP2, CP4)
Crematorium, Graveyard or Cemetery (KP2, CP4, CP4, CP7)	Flood Risk
	Environment Agency Floodzone Level 2 (KP1, KP2)
	Environment Agency Floodzone Level 3 (KP1, KP2)



SEE IN SET